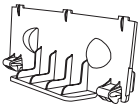


# LCD TV

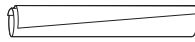
## QUICK SETUP GUIDE

### The Supplied Accessories

- Remote Control & Batteries (AAA x 2)
- Owner's Instructions
- Cleaning Cloth
- Power Cord



- Blanking Bracket



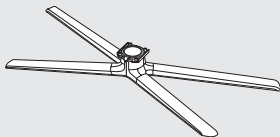
- Cable tie



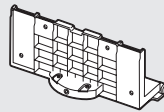
(46 ~ 55 inch TVs)

- Holder-Ring (4ea)

See separate guide for installing the stand.



- Stand (1EA)

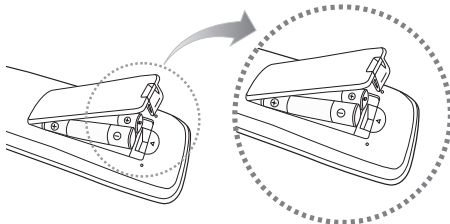


- Guide Stand (1EA)



- Screws (9EA)  
(32 inch model only: 8EA)

### Installing Batteries in the Remote Control



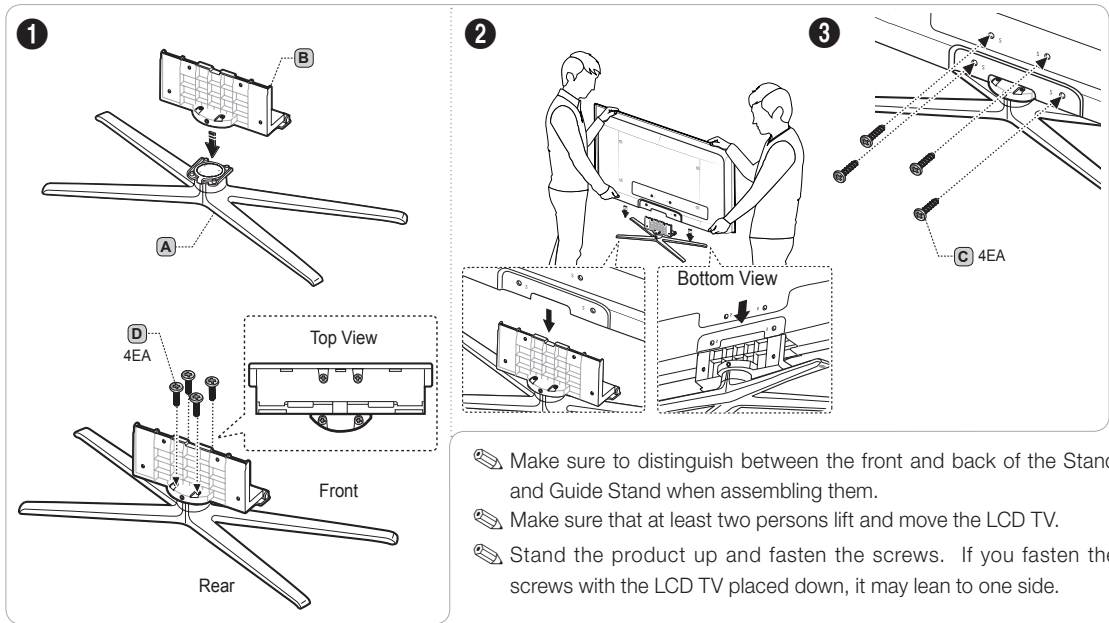
#### NOTE

- Use the remote control within 23 feet from the TV.
- Bright light may affect the performance of the remote control. Avoid using nearby special fluorescent light or neon signs.
- The colour and shape may vary depending on the model.



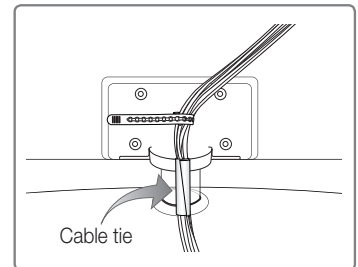
BN68-02814A -00

## Installing the Stand

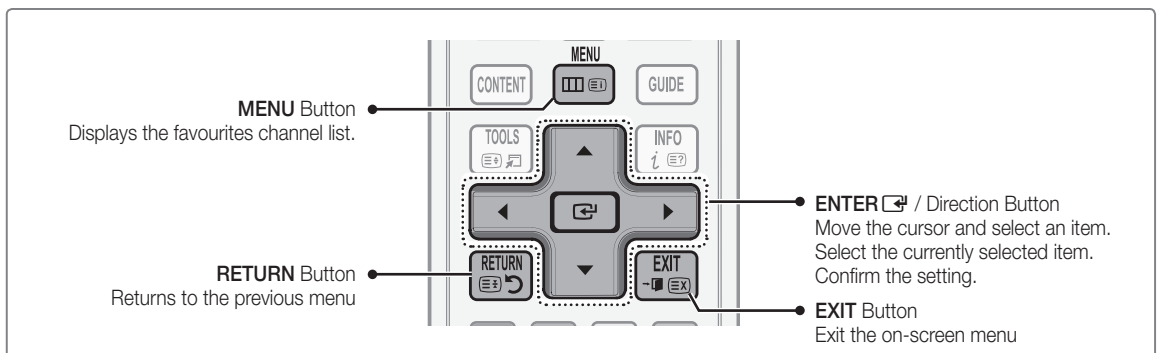


## Assembling the Cables

Enclose the cables in the Cable tie so that the cables are not visible through the stand. Overly rigid or thick cables can damage input jacks over long term use.

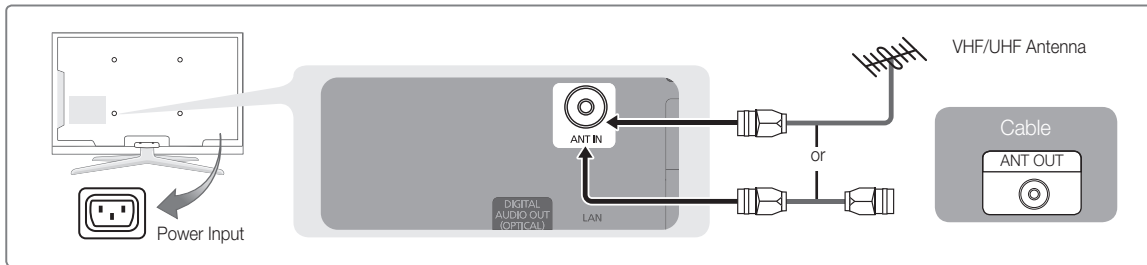


## Using the remote control buttons



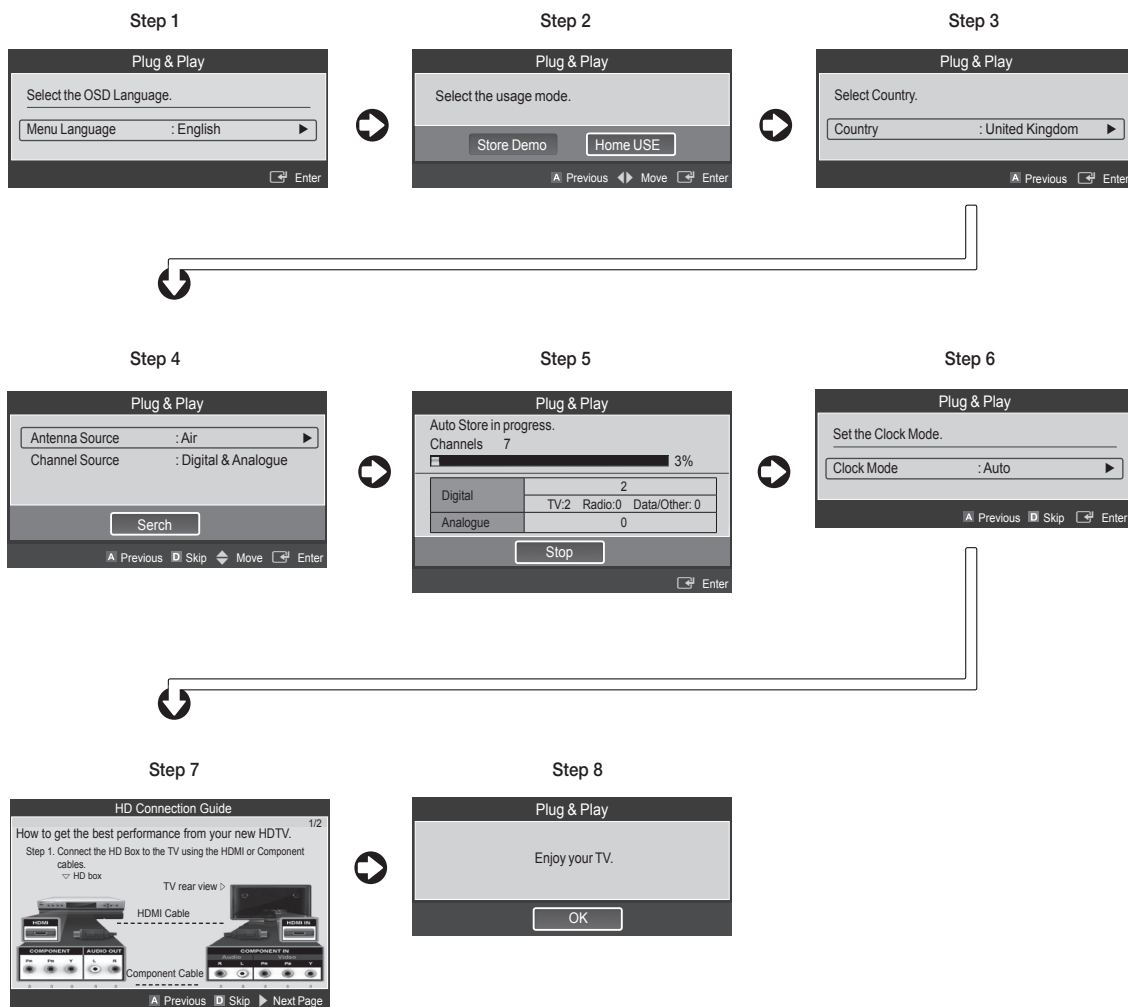
## Plug & Play

When the TV is initially powered on, basic settings proceed automatically and subsequently. If you want to reset this feature, press the **MENU** button to display menu. You can set the Plug & Play by selecting **Setup** → **Plug & Play**.



On the screen, you can set as follows.

The each step may vary depending on the Antenna source.



# Connecting a AV device



HDMI/DVI



PC/COMPONENT



EXT/VIDEO

## ★ HD connection

### Using an HDMI Cable

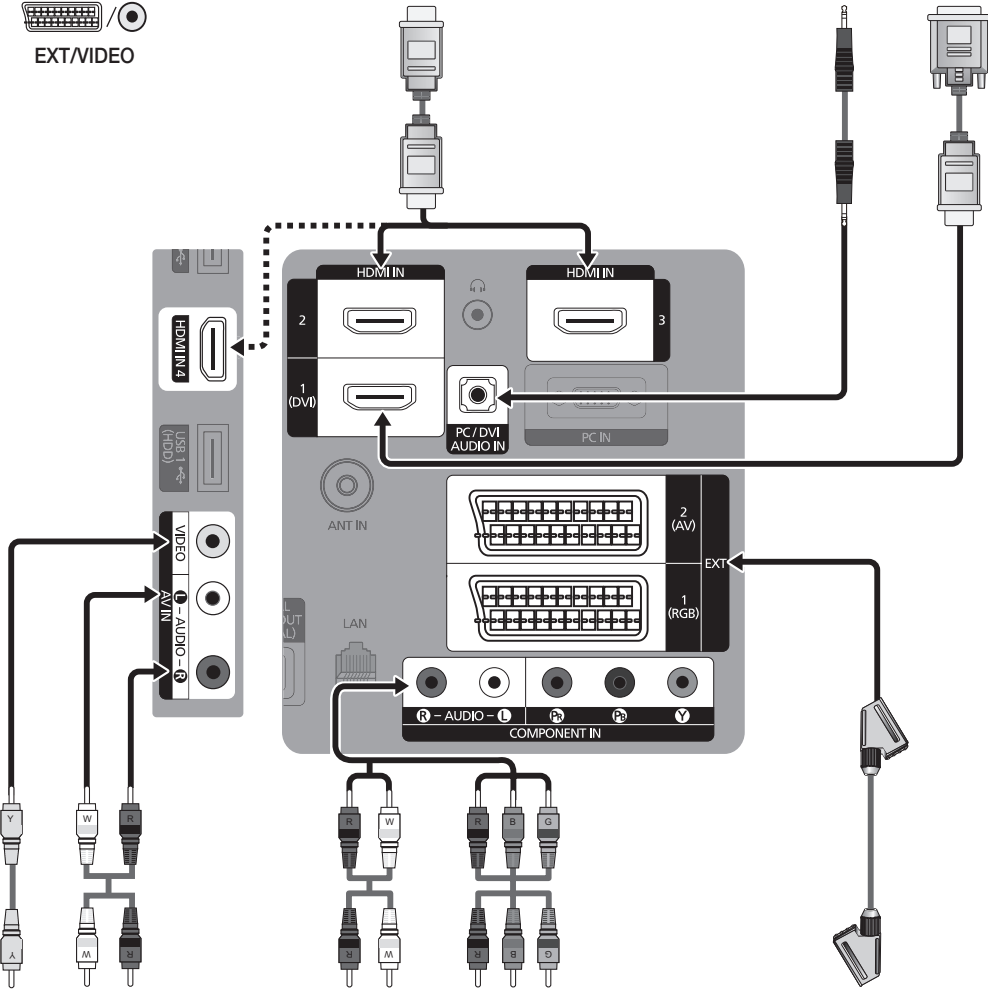
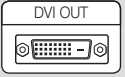
DVD / Blu-Ray player / HD Cable Box / HD Satellite receiver (STB)



## ★ HD connection

### Using a DVI Cable

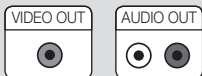
DVD / Blu-Ray player / Cable Box / Satellite receiver (STB)



## Audio/Video connection

### Using an Audio/Video Cable

VCR



## Component connection

### Using a Component Cable

DVD / Blu-Ray player / Cable Box / Satellite receiver



## Using a Scart Cable

VCR / DVD

